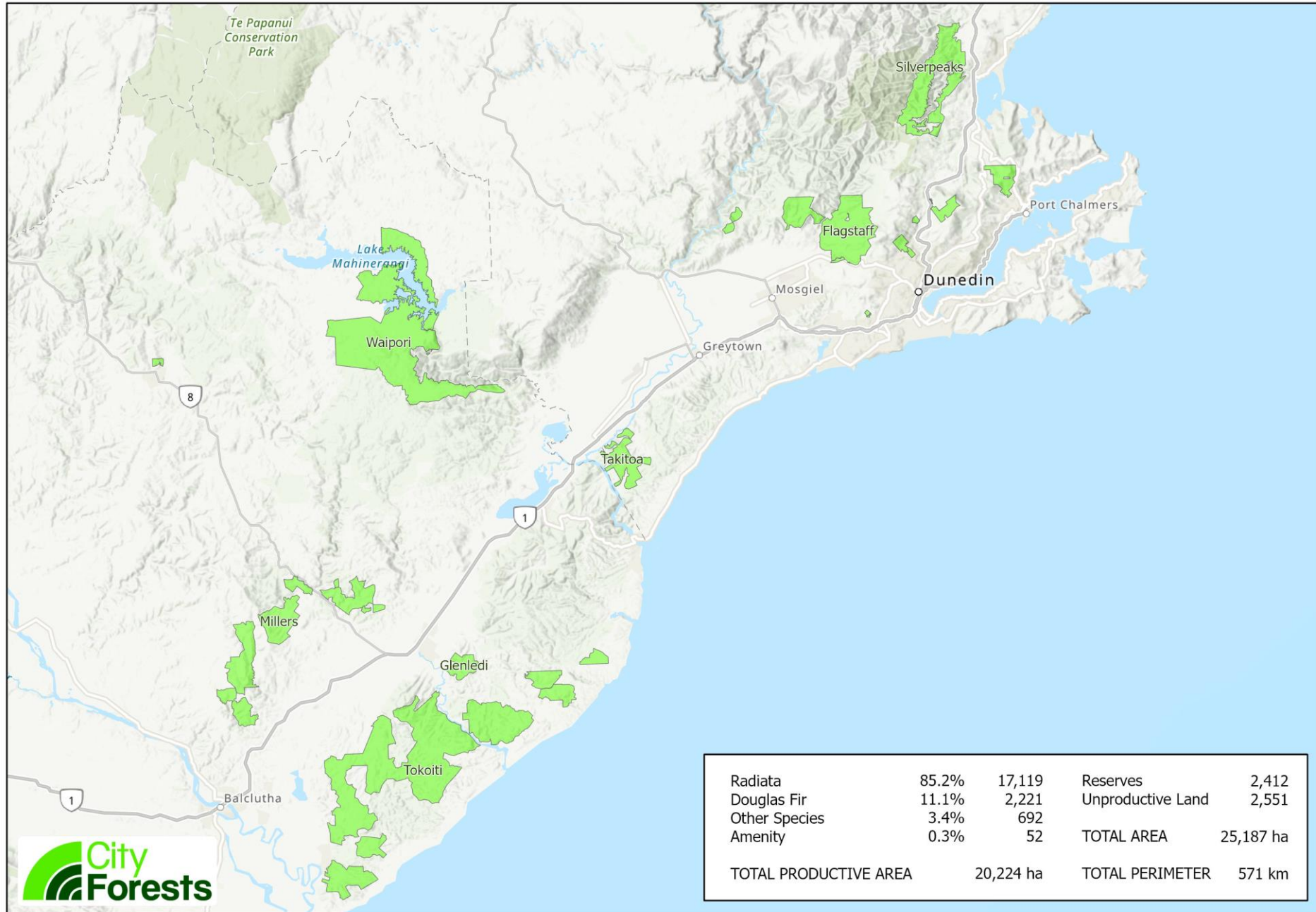




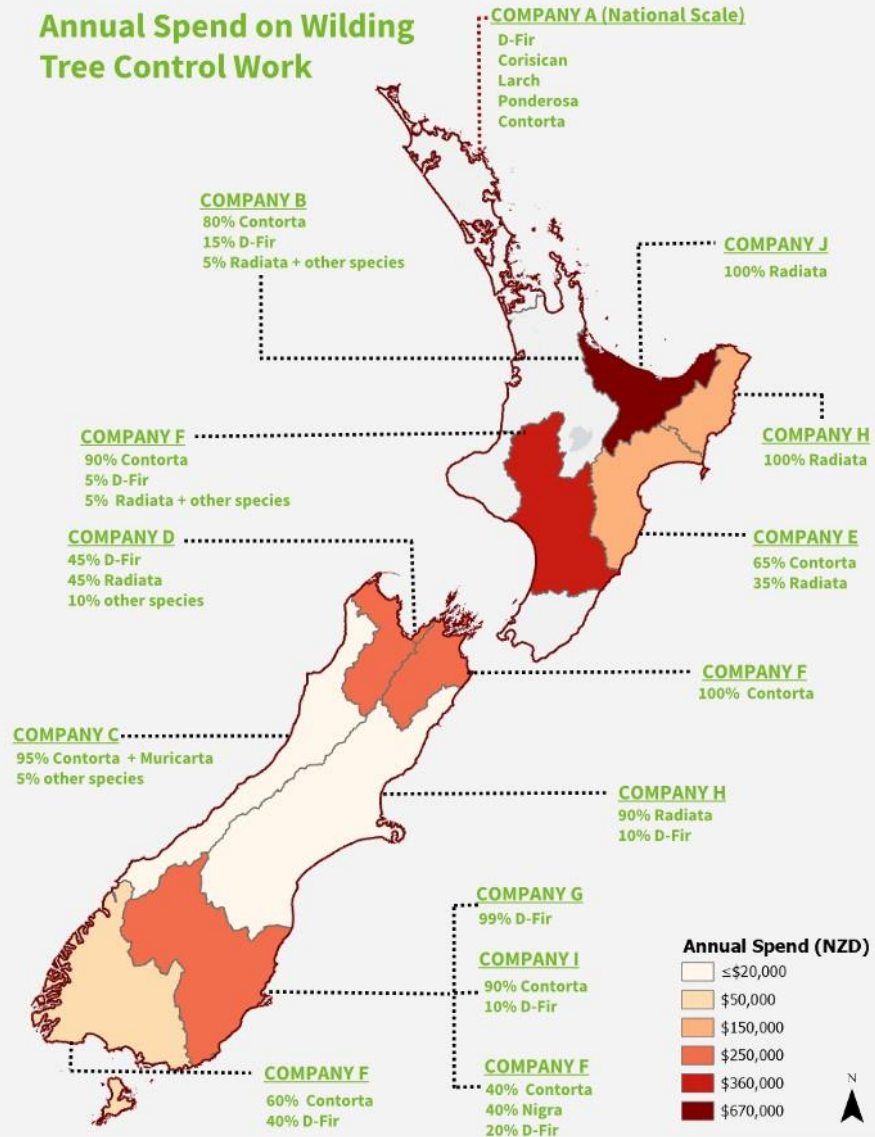
**Wilding
management,
a production
forestry
overview**

City Forests Estate

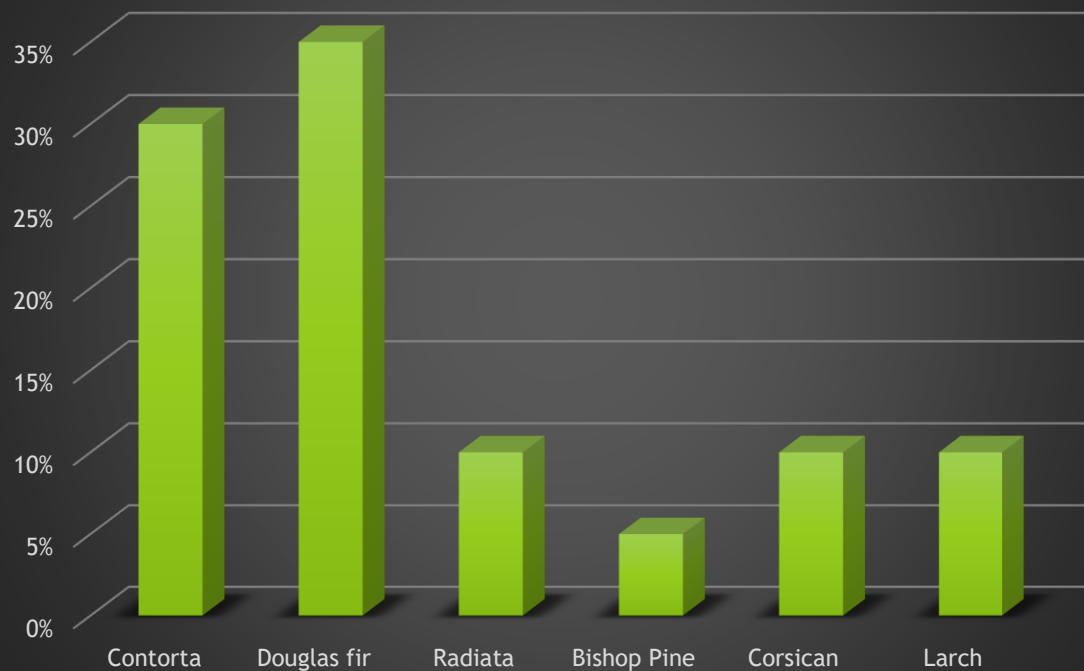




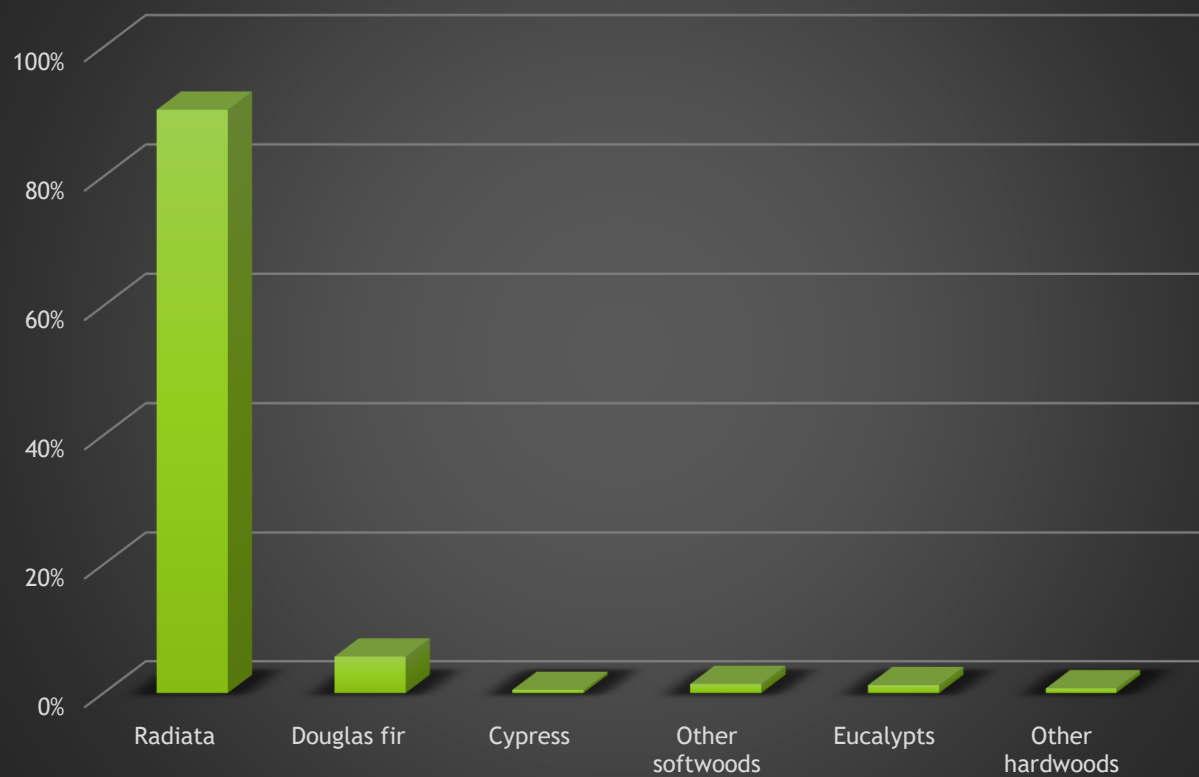
Annual Spend on Wilding Tree Control Work



Wilding work in NZ's commercial forests

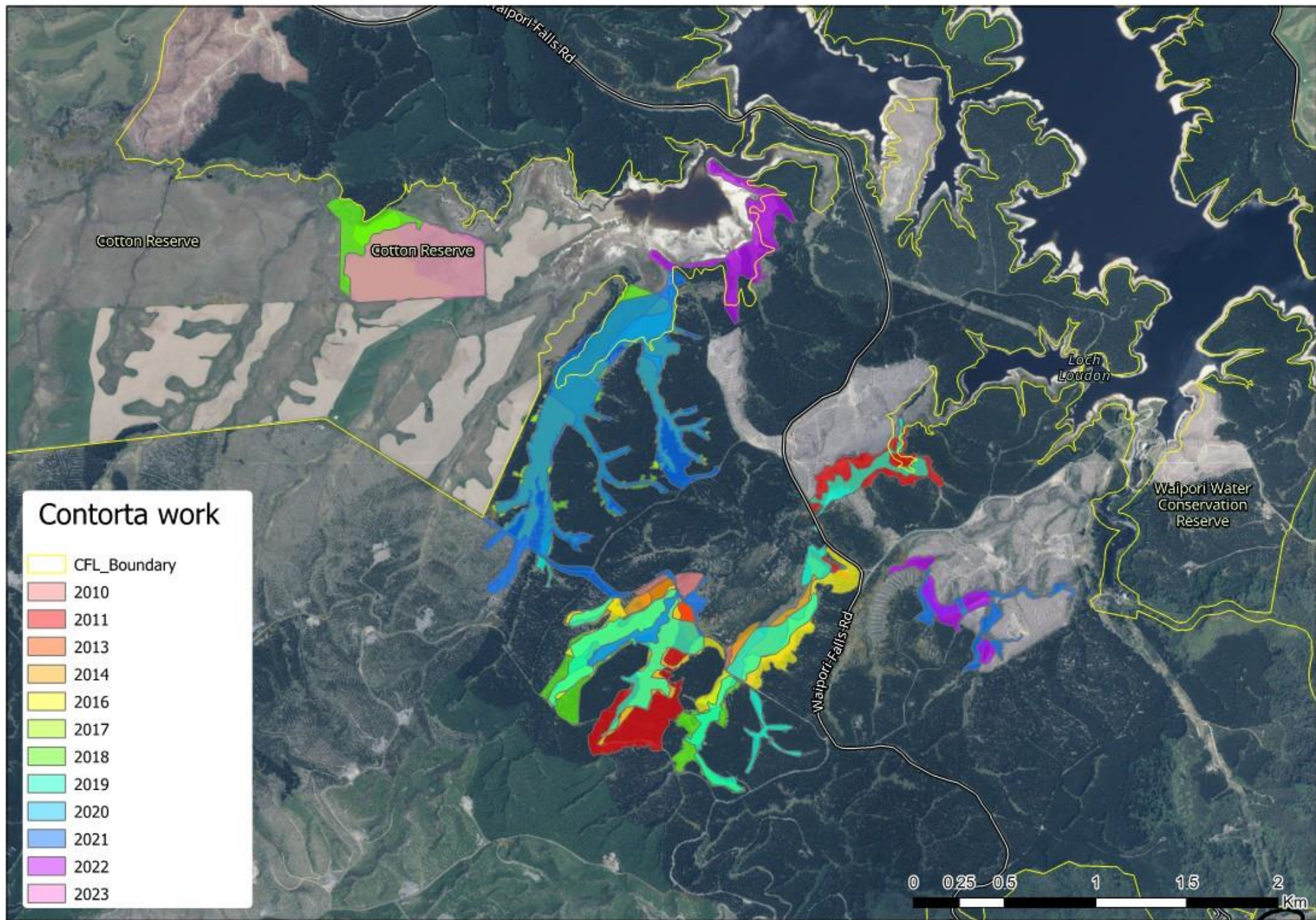


Species in NZ's commercial forests



An aerial photograph showing a vast landscape. In the foreground, a wide, light-colored river or stream flows through a dense forest of dark green trees. The middle ground is dominated by rolling hills covered in thick, dark green forest. In the background, the terrain transitions into a patchwork of green and brown fields, likely agricultural land, under a clear blue sky. The overall scene depicts a natural wetland area integrated with forested hills and agricultural land.

The Loch Luella and Loch Louden Fen Complex, a Regionally Significant Wetland



A section of cleared wetland in the Loch Louden Fen showing areas of killed contorta



Some more recent follow-up work...



...but the job's not done yet!



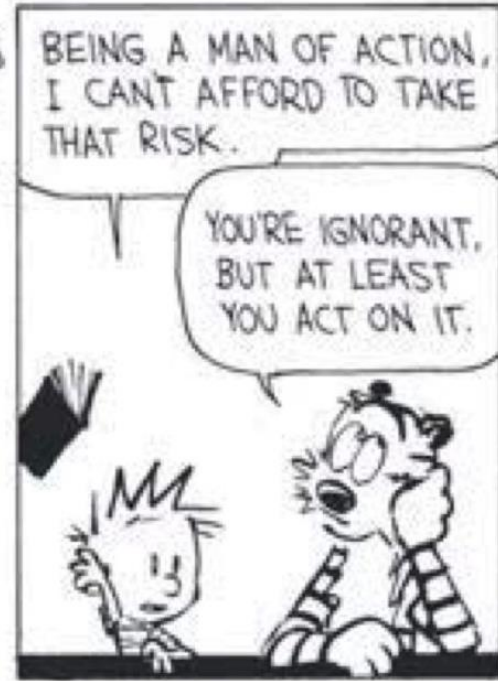
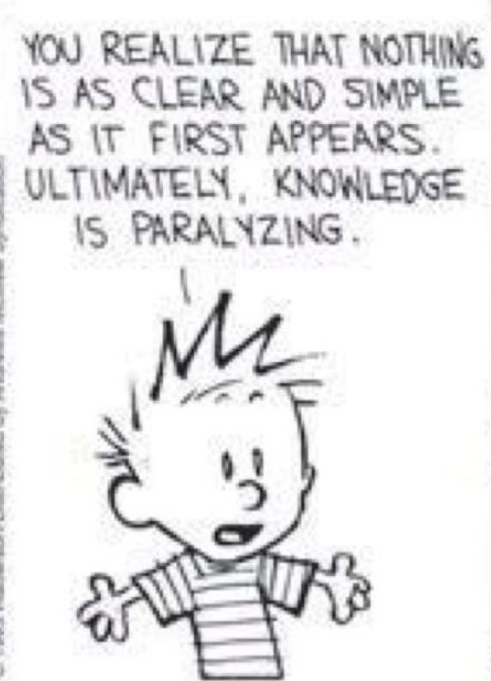
One visit is not enough for bloody contorta!





Second generation radiata forest coexisting happily with native reserve in the Waipori gorge

CALVIN and HOBBS





Sycamores steadily displacing native in the Manuka gorge between Milton and Waitahuna

Quandaries

- ▶ City Forests has ~600 ha of Douglas fir, which lies on the Waikouaiti boundary with the Silver Peaks scenic reserve.
- ▶ We purchased the surrounding Silverpeaks forest from its previous owners including Crown Forests (who planted it) and Ngai Tahu.
- ▶ The Douglas fir is producing wilding spread into the reserve.
- ▶ We are planning on some joint control work with DOC.
- ▶ Long term we plan to clear it and replace it with low-risk radiata and hybrids species

BUT....

Quandaries

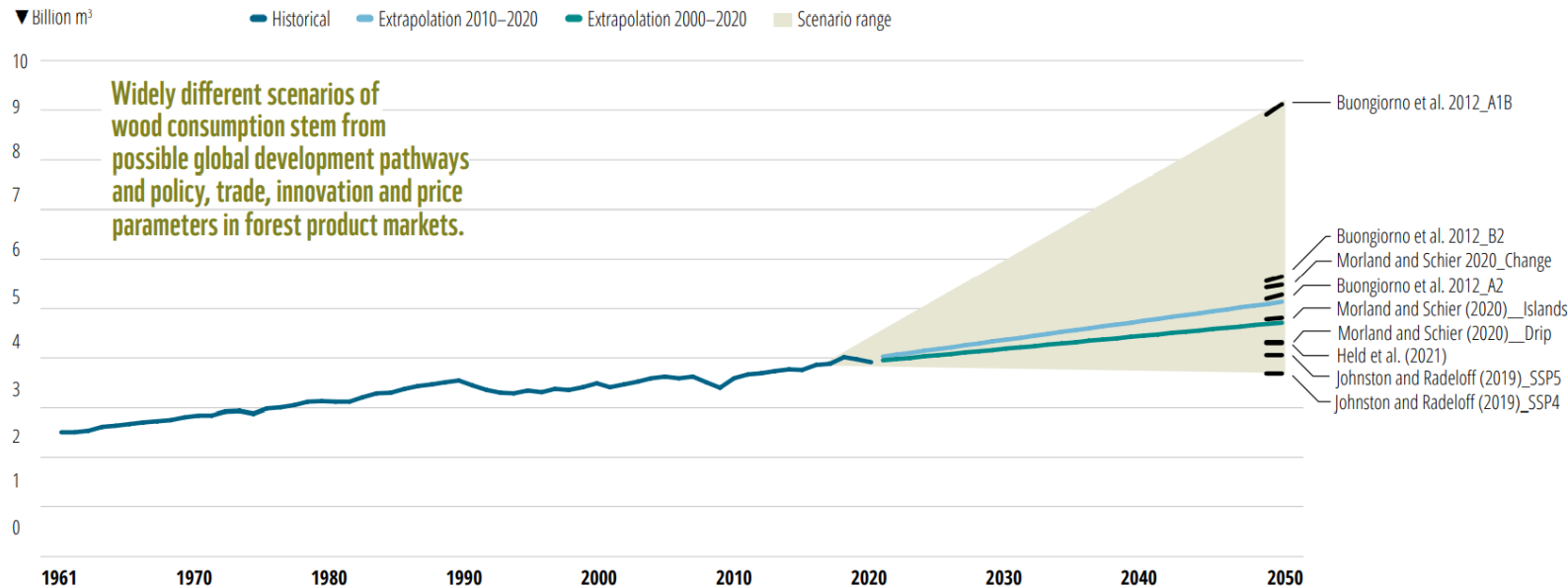
“The truth is rarely pure and never simple”, Oscar Wilde

- ▶ A rare east coast population of the endangered South Island Robins has taken up residence in this forest.
- ▶ It loves the Douglas fir, and appears to prefer it to other exotic forest areas, and even to adjacent native areas.
- ▶ So the Douglas fir stand appears to be important to the survival of this population.
- ▶ The Silver Peaks Robins have been used to populate the Orokanui Ecosanctuary.

What does the world need now?

More forests

- Forests are widely seen as key.
- Predictions are that the world needs 400 million hectares of plantation forests.
- 292 million ha of planted forests: 131 million ha are plantations with >50 million ha of these managed intensively.



Everything from Wood WWF 2022

The WBCSD highlighted back in 2015 that up to 300% more fibre is required to meet expected global shortage which would see the annual demand for wood triple by 2050 to more than 10 billion m³ year⁻¹.